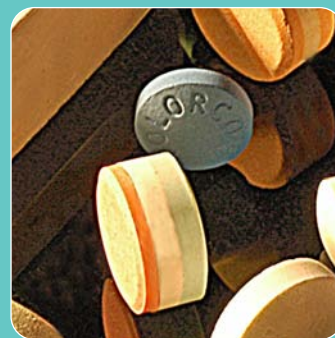


# ROTARY TABLET PRESSES



NICOMAC

# NIK TRIPLE 50-61

## NIK TRIPLE 50-61

### Double and Triple layer Rotary Tablet Press

**Triple layer 219.600 tabs\hour or Triple output up to 658.000 tabs\hour 50 D Tooling stations or 61 B Tooling station**

- Unique sliding pressure rolls
- Compression zone totally isolated
- Ergonomic design
- Sturdy body frame
- Maximum operating reliability
- Designed according to cGMP and CE requirements
- Easy knobs controls for each layer
- MMI with alphanumeric display
- Auto lubrication
- Maximum precision and efficiency
- Maximum working safety
- High flexibility
- Very competitive price



# MINITAB 8-10-12

## MINITAB 8-10-12

### Automatic table top Rotary Tablet press

R&D pilot scale Tablet Press

- Flexibility
- Reliability
- Easy Scale up

**MINITAB can be integrated with AUTOTAB - APDS Automatic Processing Data System**

**Output up to 27.000 tablets\hour**

**8 Stations D Tooling  
10 Stations B Tooling  
Multi tooling 12 stations  
4D - 4B - 4BB stations  
or 6D - 6B stations**



| Model                      | MINITAB 8                     | MINITAB 10   | MULTI TOOLING 12 |
|----------------------------|-------------------------------|--------------|------------------|
| Execution                  | cGMP - CE                     |              |                  |
| Type - Turret speed*       | Single                        |              |                  |
| Tooling                    | D                             | B            | D-B - BB         |
| Number of Stations         | 8                             | 10           | 4+4+4            |
| Max. Output (Tab/hr.)*     | 22.080                        | 27.600       | 10.080           |
| Max. Pressure*             | 8 Tons/80 Kn                  | 6 Tons/60 Kn | 8 Tons/80 Kn     |
| Max. Pre. Compression      | 2 Tons/20 Kn                  |              |                  |
| Max. Tab. Diameter         | 23 mm.                        | 15 mm.       | 23 mm.           |
| Max. Depth of Fill         | 23 mm.                        | 15 mm.       | 23 mm.           |
| Machine dimension & weight | 460x617xH1100 mm. + 516 table |              |                  |

\* Speed is related to tablet shape-size-weight as granules quality

# AUTOTAB

## AUTOTAB – APDS Automatic Processing Data System

Available for single rotary machine only.

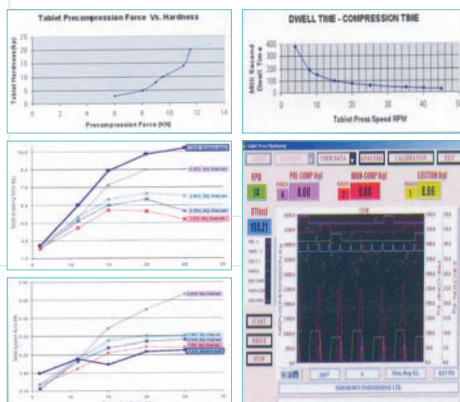
APDS allows a completely controlled process, on real time forces meter, streamline compatibility profiles, dissolution and disintegration cross-relation, raw materials evaluation, quality control and machine trouble shooting

■ SCADA System with 15" touch screen industrial PC. Intelligent recipe management system up to the 1000 product/batch complies with CFR21 Part 11.

Password management system. Remote programming, monitoring and alarm is configurable. Very detailed print records report with trends

■ Force sensing to get the following data

- Pre-compression force
- Main compression force
- Ejection force
- Real time force meters
- Single punch statistic
- Dwell time compression time



Nicomac reserve the right to change submitted the technical data. Data in this catalogue are not binding.



# NICOMAC



### NICOMAC SRL •

via Curiel, 12 - 20060 Liscate (MI)

Phone +39 02 95 42 04 1

Fax +39 02 95 42 04 44

www.nicomac.com

E-mail: sales@nicomac.it

### NICOMAC INC •

80 Oak Street

Norwood, NJ 07648

Phone +201 768 9501

Fax +201 768 9504

E-mail: salesUSA@nicomac.com

### NICOMAC FAR EAST •

502325 Hyderabad - India

Phone +91 40 30914113

Fax +91 08458-279790

E-mail: nicomac@sify.com

