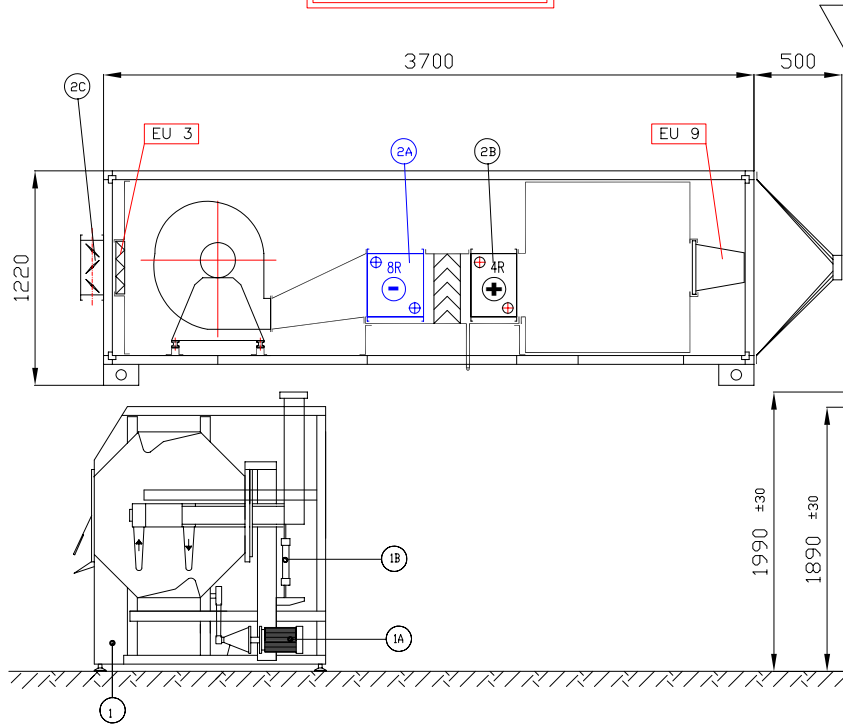
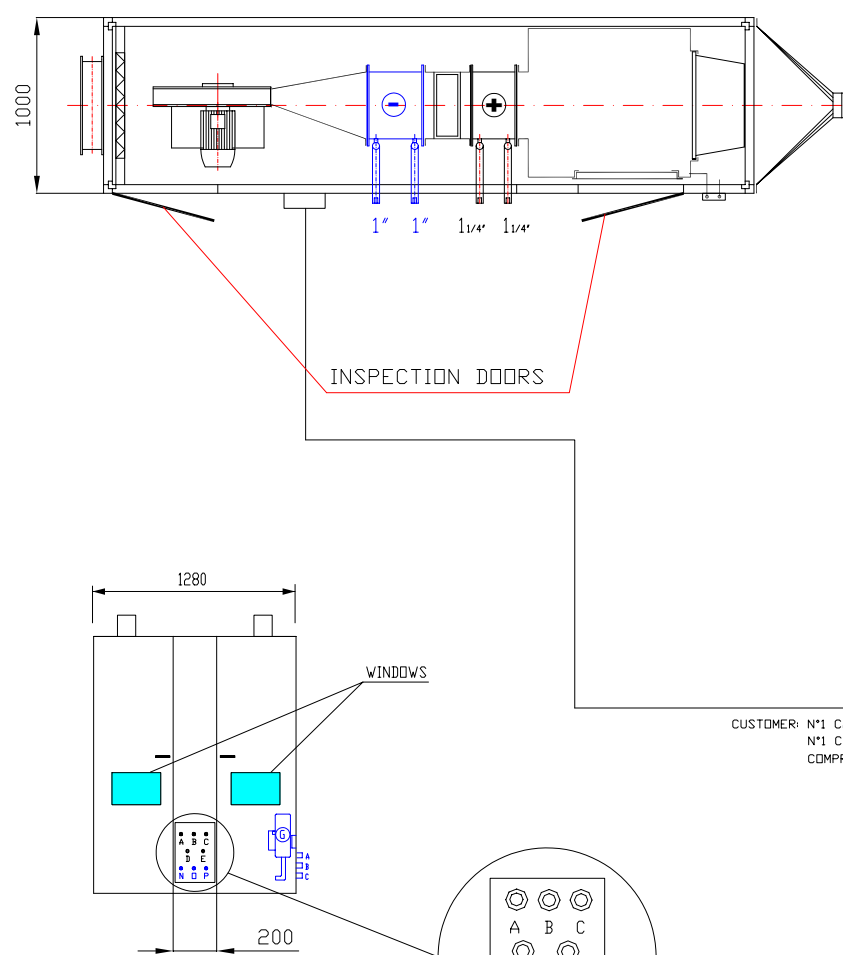
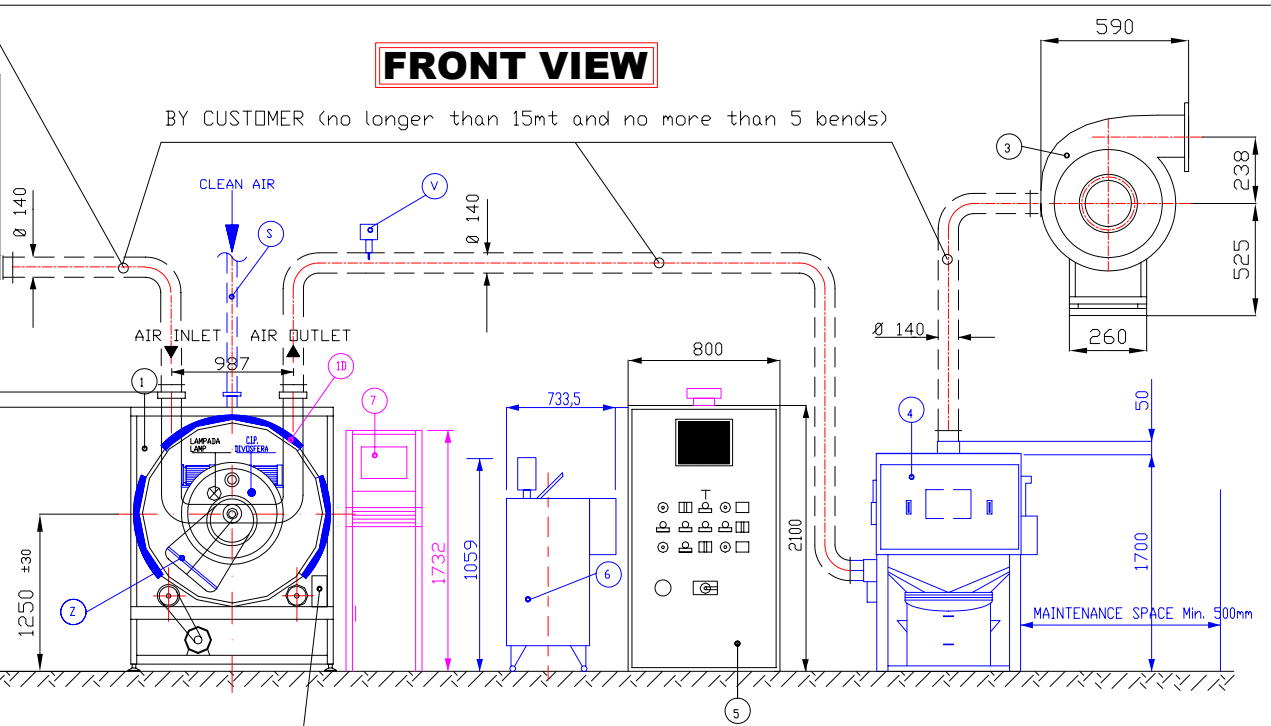


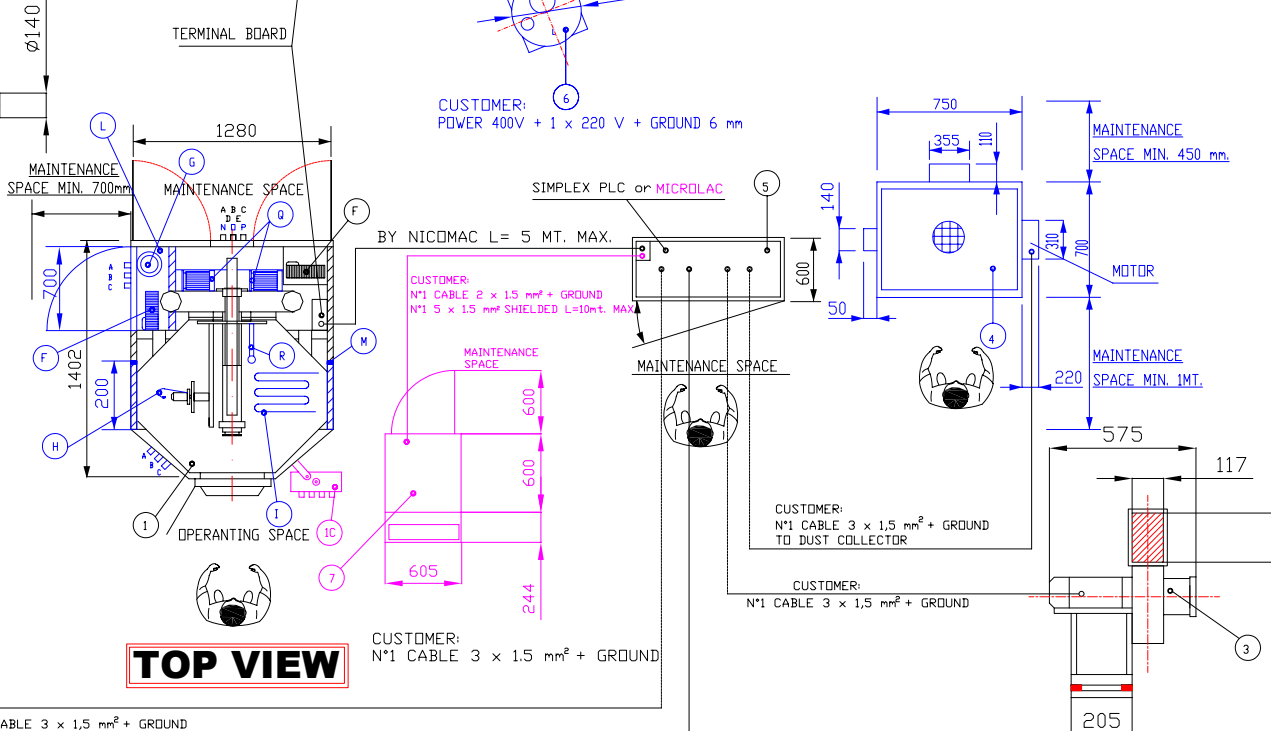
**SIDE VIEW**



**FRONT VIEW**



**TOP VIEW**



BY CUSTOMER it is necessary to provide at last 2,5 mt. of linear duct without any bend for air flow transmitter installation ( 1,5 mt. before the flow trasmitter and 1 mt. after the flow trasmitter )

BY CUSTOMER (no longer than 15mt and no more than 5 bends)

**PRELIMINARY**

LEGENDA COLORI/COLORS LEGEND	MATERIALI STANDAR / STANDARD MATERIALS
MODEL CLASSIC	Materiale cesto e parti a contatto prodotto in Acciaio Inox AISI 304
MODEL ELITE	Drum and parts in contact with product are in Stainless Steel AISI 304
OPTIONALS	Materiale cesto e parti a contatto prodotto in Acciaio Inox AISI 316
	Drum and parts in contact with product are in Stainless Steel AISI 316

1	BASSINA/COATING PAN	mod.100
	CAPACITA' TOTALE SFORZO BOCCA	Lt. 130
	TOTAL CAPACITY MOUTH LEVEL	Lt. 130
	CAPACITA' UTILE (3/4 DELLA TOTALE)	Lt. 100
	USEFUL CAPACITY (3/4 OF TOTAL CAPACITY)	Lt. 100
1A	POTENZA MOTORE CESTO	kW 1,5
	DRUM MOTOR POWER	kW 1,5
1B	PISTONE PNEUMATICO	
	PNEUMATIC PISTON	
	VELOCITA' CESTO	r.p.m. 0 - 15
	DRUM SPEED	r.p.m. 0 - 15
	PESO A VUOTO	Kg. 890
	NET WEIGHT	Kg. 890
1C	QUADRO COMANDO MANUALE	
	CONTROL BOARD MANUAL	
1D	POTENZA THERMOJACKET	3 x kW 1,4
	THERMOJACKET POWER	3 x kW 1,4
2	GRUPPO DI VENTILAZIONE/INLET AIR UNIT	
	ARIA DI ENTRATA	m³/h 1000
	INLET AIR FLOW	m³/h 1000
	HST UTILE	mm/H <sub>2</sub> O 300
	USEFUL PRESSURE	mm/H <sub>2</sub> O 300
	POTENZA VENTILATORE MMATA	kW 2,2
	FAN POWER	kW 2,2
2A	BATTERIA DI RAFFREDDAMENTO	PORTATA MEDIA
	COOLING COIL	FLOW RATE AVERAGE
		Lt/h 2417
2B	BATTERIA DI RISCALDAMENTO A VAPORE	
	STEAM HEATING COIL	
	CONSUMO VAPORE	Kg/h 56
	STEAM CONSUMPTION	Kg/h 56
	PRESSIONE VAPORE	BAR 3
	STEAM PRESSURE	BAR 3
	PESO	Kg. 500
	WEIGHT (a+b)	Kg. 500
2C	SERRANDA PNEUMATICA	
	PNEUMATIC CONTROL DAMPER	
3	VENTILATORE DI ASPIRAZIONE/OUTLET AIR FAN	
	ARIA IN USCITA	m³/h 1100
	OUTLET AIR	m³/h 1100
	HST UTILE	mm/H <sub>2</sub> O 300
	USEFUL PRESSURE	mm/H <sub>2</sub> O 300
	POTENZA VENTILATORE ASPIRAZIONE	kW 1,5
	SUCTION FAN MOTOR	kW 1,5
	PESO	Kg. 65
	WEIGHT	Kg. 65
4	ABBATTITORE POLVERI / DUST COLLECTOR	
	MOTORE SCUOTITORE	kW 0,25
	SHAKER MOTOR	kW 0,25
	PESO A VUOTO	Kg. 340
	NET WEIGHT	Kg. 340
5	PLC	SIMPLEX MICROLAC
	POTENZA TOTALE	kW 12 kW 12
	TOTAL POWER	kW 12 kW 12
	PESO	Kg. 400 Kg. 480
	WEIGHT	Kg. 400 Kg. 480
6	SERBATOIO/TANK	BM 60LT.
	POTENZA BAGNOMARIA	kW 3
	TANK POWER	kW 3
	POTENZA AGITATORE	kW 0,37
	STIRRER POWER	kW 0,37
	PESO VUOTO BAGNOMARIA	Kg. 150
	NET WEIGHT	Kg. 150
7	PC	
	POTENZA PC	kW 1,75
	PC POWER	kW 1,75
	PESO ARMADIO PC	Kg. 800
	PC CABINET WEIGHT	Kg. 800
UTILITIES		
	ARIA COMPRESSA	6 - 8 BAR
	COMPRESSED AIR	6 - 8 BAR
	CONSUMO A 6 BAR	1200 Lt/min
	CONSUMPTION AT 6 BAR	1200 Lt/min
	CONSUMO ARIA POMPA ALTA PRESSIONE	Lt/min 600
	HIGH PRESSURE PUMP AIR CONSUMPTION	Lt/min 600
	ACQUA ADDOLCITA (CONSUMO PER SPRAY BALL A 5 BAR)	Lt/min 120
	SOFTENED WATER (SPRAY BALL CONSUMPTION AT 5 BAR)	Lt/min 120
	PRESSIONE ACQUA	4 - 5 BAR
	WATER PRESSURE	4 - 5 BAR
	TENSIONE	400V - 50 Hz
	VOLTAGE	400V - 50 Hz
	AZOTO (PER SPRAY CLEAN, CON DUE PISTOLE)	30 - 40 BAR
	NITROGEN (FOR SPRAY CLEAN, WITH TWO GUNS)	30 - 40 BAR
	PORTATA	m³/h 30
	FLOW RATE	m³/h 30
POS. LEGENDA COMPONENTI STANDARD / STANDARD COMPONENTS LEGEND		
A	INGRESSO FILM COATING Ø 3/8"	
	FILM COATING INLET Ø 3/8"	
B	INGRESSO SUGAR COATING Ø 1/2"	
	SUGAR COATING INLET Ø 1/2"	
C	RICICLO SUGAR COATING Ø 1/4"	
	SUGAR COATING RECYCLING Ø 1/4"	
D	INGRESSO ARIA COMPRESSA INDUSTRIALE Ø 12 X 10	
	INDUSTRIAL COMPRESSED AIR INLET Ø 12 X 10	
E	INGRESSO ARIA COMPRESSA FILTRATA Ø 12 X 10	
	COMPRESSED FILTERED AIR INLET Ø 12 X 10	
F	POMPA PERISTALTICA	
	PERISTALTIC PUMP	
POS. OPTIONALS MACCHINA/MACHINE OPTIONALS		
G	POMPA AD ALTA PRESSIONE	P
	HIGH PRESSURE PUMP (OPT)	INGRESSO SPRAY CLEAN Ø 1/4"
		SPRAY CLEAN INLET Ø 1/4"
H	SPRAY CLEAN	Q
		BRACCIO PORTAPISTOLE AUTOMATICO
		AUTOMATIC GUNS ARM
I	THERMOJACKET	R
		FLUIDO C.I.P.
		C.I.P. FLUID
L	VANO DI SEPARAZIONE POMPE CON PORTA DI ISPEZIONE	S
	PUMP SEPARATION PANEL WITH INSPECTION DOOR	TUBO ARIA PULITA PER VANO TECNO
		CLEAN AIR PIPE FOR TECHNICAL AREA
M	PANNELLI DI INTERFACCIA	V
	INTERFACE PANELS	RILEVATORE DI GAS IN ARIA
		ORGANIC SOLVENT SENSOR
N	INGRESSO ACQUA THERMOJACKET Ø 1/2"	Z
	THERMOJACKET INLET WATER Ø 1/2"	AIR DIFFUSER FOR PELLETS
O	USCITA ACQUA THERMOJACKET Ø 1/2"	
	THERMOJACKET OUTLET WATER Ø 1/2"	

1	20/06/2000	GENERAL REVIEW	D.C.	
0	08/02/2000	ISSUE	Langre	D.C.
Rev.	DATA	MODIFIED	Dwg.	Approv.
<b>NICOMAC</b>				
NICOMAC srl - Via Kennedy 47 - 20090 Rodano (MO) ITALY Tel. +39.295.32.82.88 - Fax. +39.295.32.13.87				
CUSTOMER:		TAG N.		
		REQUISITION		
		ORDER N.		
		PROJECT N.		
		DRAWING		
		N° <b>SK.NCS.202</b>		
SCALE	PRELIMINARY LAY OUT OF INSTALLATION			
	<b>100 CLASSIC / ELITE</b>			
This drawing and the copyright are the property of Nicomac Srl and all information with its contents are confidential. This drawing must not be reproduced and disclosed to third parts without Nicomac permission.				