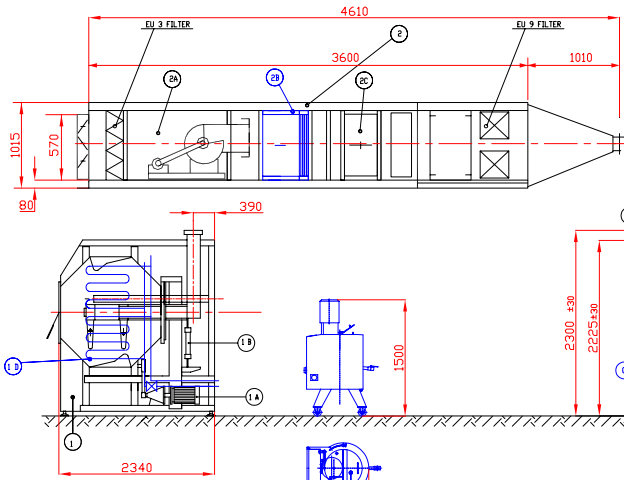
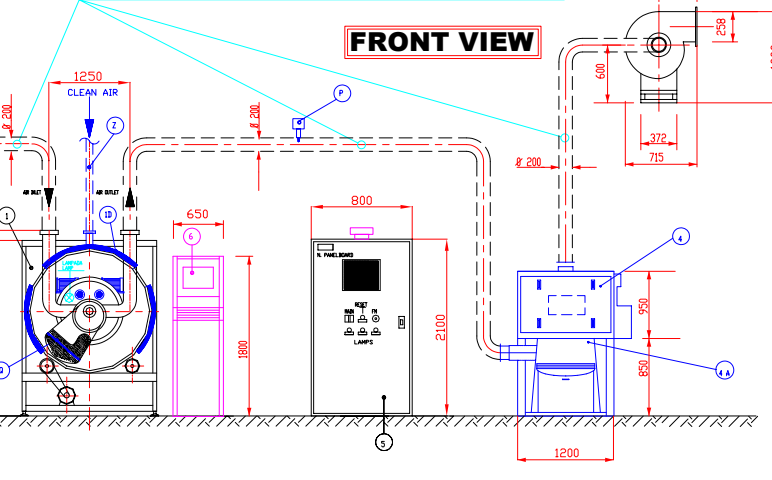


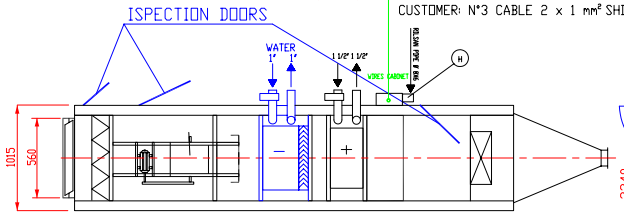
SIDE VIEW



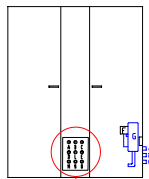
FRONT VIEW



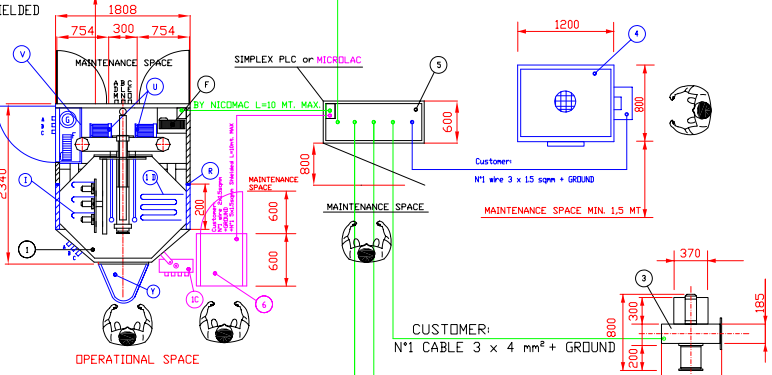
INSPECTION DOORS



REAR VIEW



TOP VIEW



LEGENDA COLORI / COLORS LEGEND

MODEL CLASSIC	■
MODEL ELITE	■
OPTIONALS	■

MATERIALI STANDARD / STANDARD MATERIALS

Materiale cesto e parti a contatto prodotto in Acciaio Inox AISI 304
Drum and parts in contact with product are in Stainless Steel AISI 304

MATERIALI OPTIONALI / OPTIONALS MATERIALS

Materiale cesto e parti a contatto prodotto in Acciaio Inox AISI 316
Drum and parts in contact with product are in Stainless Steel AISI 316

CUSTOMER: N°1 CABLE 3 x 4 mm² + GROUND
 CUSTOMER: N°3 CABLE 2 x 1 mm² SHIELDED
 CUSTOMER: N°1 wire 3 x 15 spgm + GROUND
 CUSTOMER: N°1 CABLE 3 x 4 mm² + GROUND
 CUSTOMER: ELECTRICAL POWER x 400 V - 50 Hz
 3 x 16 mm² + GROUND

BY CUSTOMER it is necessary to provide at least 3 mt. of linear duct without any bend for air transmitter installation

BY CUSTOMER (no longer than 15mt and no more than 5 bends)

1	BASSINA / COATING PAN	mod. 450
	CAPACITA' TOTALE SFORZO BODCA	16.402
	TOTAL CAPACITY MOTOR LEVEL	16.402
	CAPACITA' UTILE (3/4 DELLA TOTALE)	12.450
	USEFUL CAPACITY (3/4 OF TOTAL CAPACITY)	12.450
1A	MOTORE MOTOR	kW 4
1B	PISTONA PNEUMATICO PNEUMATIC PISTON	mm/4 300
	DRUM SPEED	rpm 0 - 12
1C	BARILE CESTO INNALE	
1D	PERNO TERMALCOT	3 x kW 2
	WEIGHT	kg 2500

2	GRUPPO DI MANDATA / INLET AIR UNIT	
2A	GRUPPO DI MANDATA INLET AIR UNIT	
	AREA DI ENTRATA INLET AIR FLOW	m³/h 3000
	IST UTILE USEFUL PRESSURE	mmHg 300
	POTENZA VENTILATORE MANDATA FAN POWER	7.5 kW
2B	BATTERIA DI RAFFREDDAMENTO COOLING COIL	
	PORTATA ACQUA DI RAFFREDDAMENTO COLD WATER FLOW RATE	lt/h 8474
2C	BATTERIA DI RISCALDAMENTO HEATING COIL	
	CONDENSO VAPORI STEAM CONSUMPTION	kg/h 190
	POTENZA VAPORI STEAM PRESSURE	3 bar
	TEMPERATURA INGRESSO VAPORE CLEAN TEMPERATURE INLET	143 °C
	PERO WEIGHT	kg 600
	# TUBAZIONE ARIA # DUCTS CONNECTION	mm 200

3	VENTILATORE DI ASPIRAZIONE / OUTLET AIR FAN	
	AREA IN USCITA OUTLET AIR	m³/h 3000
	IST UTILE USEFUL PRESSURE	mmHg 300
	POTENZA VENTIL. ASPIRAZIONE SUCTION FAN MOTOR	kW 7.5
	# TUBAZIONE ARIA # DUCTS CONNECTION	mm 200
	PERO WEIGHT	kg 110

4	ABBATTITORE POLVERI / DUST COLLECTOR	FTM 25 EV-S
4A	MOTORE SCURTITORE SHOWER MOTOR	kW 12
	PERO WEIGHT	kg 49

5	PLC	SIMPLEX	MICROLAC
	POTENZA TOTALE TOTAL POWER	kW 27	kW 27
	PERO WEIGHT	kg 400	kg 400

7	SERBATOIO/TANK lt 100	BM 100
	POTENZA MANDATA INLET POWER	kW 4
	POTENZA MANDATA STRAKE POWER	kW 0,75
	PERO A VUOTO NET WEIGHT	kg 200

UTILITIES	AREA COMPRESSA COMPRESSED AIR	BAR 6-8
	CONDENSO CONDENSATION	A 6 BAR 2000 lt/h max
	CONDENSO ACQUA POMPA ALTA PRESSIONE HIGH PRESSURE PUMP AIR CONSUMPTION	100mm/600
	ACQUA INDICATA A 15°C MAX FRESH WATER 15°C MAX	16/m³/500
	PRESSURE ACQUA WATER PRESSURE	BAR 4-5

POS. LEGENDA / LEGEND	
A	INGRESSO FILA COATING 3/4" / INLET COATING INLET 3/4"
B	INGRESSO FILA COATING 1/2" / INLET COATING INLET 1/2"
C	INGRESSO FILA COATING 1/4" / INLET COATING INLET 1/4"
D	INGRESSO AREA COMPRESSA INDUSTRIALE 3/4" / INLET AREA COMPRESSED AIR INLET 3/4"
E	INGRESSO AREA COMPRESSA FILTRATA 3/4" / INLET AREA COMPRESSED AIR INLET 3/4"
F	POMPA PERISTALTICA PERISTALTIC PUMP
G	POMPA AD ALTA PRESSIONE HIGH PRESSURE PUMP 3000
H	ACQUA INDICATA A 15°C MAX FRESH WATER 15°C MAX
I	INGRESSO SPRAY CLEAN 3/4" / INLET SPRAY CLEAN INLET 3/4"
M	FLUIDO DI RIFIUTO / WASTE FLUID
N	USCITA DI RIFIUTO / WASTE FLUID OUTLET
O	CONDENSO FLUIDO DI RIFIUTO / CONDENSATION WASTE FLUID
P	RELIEVO IN GAS IN MANOMANOMETER RELEASE
Q	INGRESSO PER FILLETTI / INLET BY FITTINGS
R	PANNELLO DI INTERFACCIA / INTERFACE PANEL
S	INGRESSO ACQUA TERMALCOT / INLET WATER
T	USCITA ACQUA TERMALCOT / OUTLET WATER
U	INGRESSO ACQUA TERMALCOT / INLET WATER
V	INIEZIONE DI SEPARAZIONE PORE CON PORTA DI ISPEZIONE / PORE SEPARATION PANEL WITH INSPECTION DOOR
W	USCITA ACQUA TERMALCOT / OUTLET WATER
X	USCITA ACQUA TERMALCOT / OUTLET WATER
Y	USCITA ACQUA TERMALCOT / OUTLET WATER
Z	USCITA ACQUA TERMALCOT / OUTLET WATER
Y	USCITA ACQUA TERMALCOT / OUTLET WATER

PRELIMINARY

08.09.00	ISSUE	D.C.
REV	DATA	MODIFIED
		DWG
		APPROV
CUSTOMER: SSL INTERNATIONAL		
TAG N. REDAZIONE		
ORDER N.		
PROJECT N.		
DRAWING N. SK.NCS.259		
SCALE: PRELIMINARY LAY-OUT DRAWING OF 450 CLASSIC/ELITE		
This drawing and the copyright are the property of Nicomatic Srl and all information in its contents are confidential. This drawing must not be reproduced and disclosed to third parties without Nicomatic permission.		

NICOMAC NICOMAC srl - Via Kennedy 47 - 20099 Robbione (BO) ITALY
 Tel. ++39.052.82.82.88 - Fax. ++39.052.32.1387