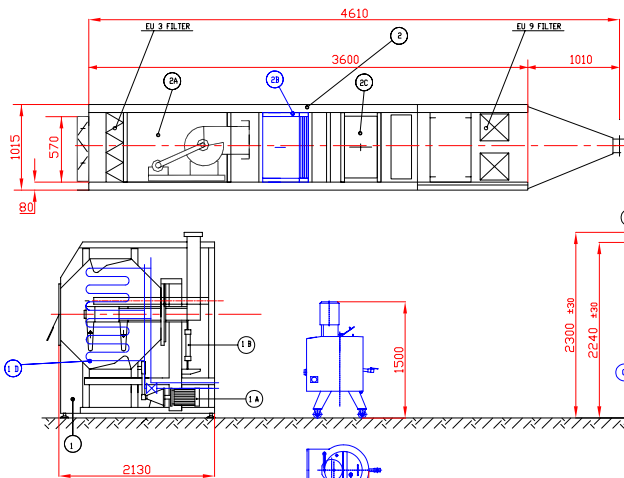
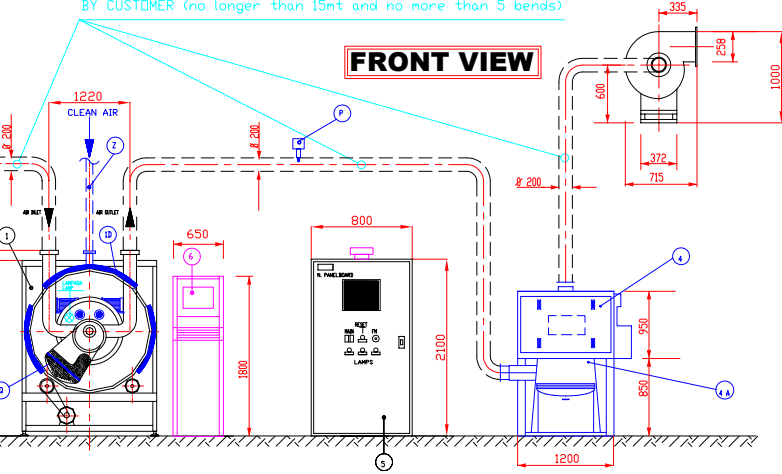


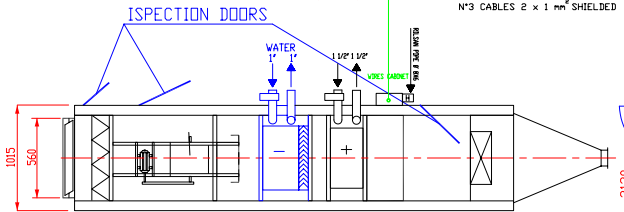
**SIDE VIEW**



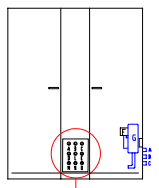
**FRONT VIEW**



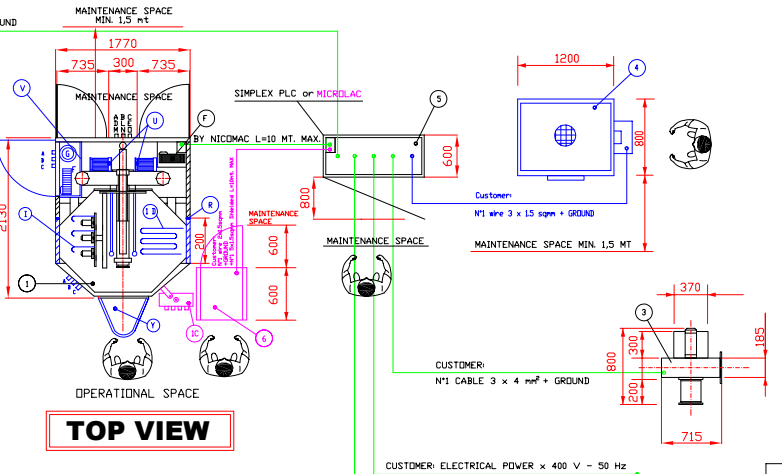
**INSPECTION DOORS**



**REAR VIEW**



**TOP VIEW**



CUSTOMER: PREFERENTIAL POWER SUPPLY FOR PLC (PHASE-NEUTRAL) 2 x 15 mm² (OPTIONAL)

CUSTOMER: ELECTRICAL POWER x 400 V - 50 Hz

LEGENDA COLORI / COLORS LEGEND  
 MODEL CLASSIC ■  
 MODEL ELITE ■  
 OPTIONAL ■

**PRELIMINARY**

MATERIALI STANDARD / STANDARD MATERIALS  
 Materiale cesto e parti a contatto prodotto in Acciaio Inox AISI 304  
 Drum and parts in contact with product are in Stainless Steel AISI 304  
 MATERIALI OPZIONALI / OPTIONAL MATERIALS  
 Materiale cesto e parti a contatto prodotto in Acciaio Inox AISI 316  
 Drum and parts in contact with product are in Stainless Steel AISI 316

1	BASSINA / COATING PAN	mod. 350
	CAPACITA' TOTALE SFORZO BODCA	Lt. 473
	TOTAL CAPACITY NORTH LEVEL	Lt. 350
	CAPACITA' UTILE (3/4 DELLA TOTALE)	Lt. 350
	USEFUL CAPACITY (3/4 OF TOTAL CAPACITY)	Lt. 350
1A	MOTORE MOTOR	kW 0,2
1B	PISTONE PNEUMATICO PNEUMATIC PISTON	
	VELOCITA' CESTO DRUM SPEED	rpm 0 - 12
1C	QUADRO COMANDI MANUALE	
1D	POTENZA THERMOLACKET THERMOLACKET POWER	3 x KV 1,8
	PESO A VUOTO NET WEIGHT	kg 1600

2	GRUPPO DI VENTILAZIONE / INLET AIR UNIT	
2A	GRUPPO DI MANDATA INLET AIR UNIT	
	AREA DI ENTRATA INLET AIR FLOW	m²/h 3000
	HST UTILE USEFUL PRESSURE	mmHg 300
	POTENZA VENTILATORE MANDATA FAN POWER	7,5 kW
2B	BATTERIA DI RAFFREDDAMENTO COOLING COIL	
	CONSUMO ACQUA RAFFREDDAMENTO COLD WATER CONSUMPTION	739 m³/h 4°C
2C	BATTERIA DI RISCALDAMENTO HEATING COIL	
	CONSUMO VAPORI STEAM CONSUMPTION	kg/h 190
	POTENZA VAPORI STEAM PRESSURE	3 bar
	TEMPERATURA INGRESSO VAPORE STEAM TEMPERATURE INLET	143 °C
	PESO WEIGHT	kg 575
	# TUBAZIONE ARIA # DUCTS CONNECTION	mm 200

3	VENTILATORE DI ASPIRAZIONE / OUTLET AIR FAN	
	AREA IN USCITA OUTLET AIR	m²/h 4000
	HST UTILE USEFUL PRESSURE	mmHg 300
	POTENZA VENTILATORE ASPIRAZIONE SUCTION FAN MOTOR	kW 5,5
	# TUBAZIONE ARIA # DUCTS CONNECTION	mm 200
	PESO WEIGHT	kg 110

4	ABBATTITORE POLVERI / DUST COLLECTOR	FTM 25 EV-S
4A	MOTORE SCURTITORE SHOWER MOTOR	kW 12
	PESO WEIGHT	kg 49

5	PLC	SIMPLEX	MICROLAC
	POTENZA TOTALE TOTAL POWER	kW 23	kW 25
	PESO WEIGHT	kg 400	

7	SERBATOIO/TANK	BM 60 L.E.
	POTENZA RAGGIORAZZA TANK POWER	kW 3
	POTENZA AGITAZIONE STIRNER POWER	kW 0,37
	PESO A VUOTO NET WEIGHT	kg 150

UTILITIES	
ARIA COMPRESSA COMPRESSED AIR	BAR 6-8
COSUMI CONSUMPTION	A 6 BAR 1800 L/h
CONSUMO ACQUA POMPA ALTA PRESSIONE HIGH PRESSURE PUMP AIR CONSUMPTION	L/h/m³/500
ACQUA RISCALDATA A 15°C MAX FRESH WATER 15°C MAX	L/h/m³/500
PRESSURE ACQUA WATER PRESSURE	BAR 4-5

POS. LEGENDA / LEGEND	
A	INGRESSO FILM COATING 1/2\"/>
B	INGRESSO SUGAR COATING 1/2\"/>
C	INGRESSO SUGAR COATING 1/2\"/>
D	INGRESSO SUGAR COATING 1/2\"/>
E	INGRESSO ACQUA COMPRESSA INDUSTRIALE 1/2\"/>
F	INGRESSO ACQUA COMPRESSA FILTRATA 1/2\"/>
G	POMPA AD ALTA PRESSIONE HIGH PRESSURE PUMP (OPT)
H	ACQUA RISCALDATA A 15°C MAX FRESH WATER 15°C MAX
I	INGRESSO SPRAY CLEAN 1/4\"/>
L	SPRAY CLEAN INLET 1/4\"/>
M	FLUIDO DI N°1 OF FLUID N°1
N	USCITA DI N°1 OF FLUID N°1
O	USCITA FLUIDO DI N°1 E 2 OUTLET FLUID OF 1 AND 2
P	RAFFREDDATORE IN GAS IN ARIA SHOWER SOLVENT SHOWER
Q	INGRESSO PER FILLETTI AND SERVICES FOR FILLETS
R	FANNELLI DI INTERFACCIA INTERFACE FILLETS
S	INGRESSO ACQUA THERMOLACKET THERMOLACKET INLET WATER
T	USCITA ACQUA THERMOLACKET THERMOLACKET OUTLET WATER
U	BRACCIO OPERAZIONE AUTOMATA AUTOMATIC OPERATING ARM
V	VALVOLE DI SEPARAZIONE PORE CON PORTA DI LUBRIFICAZIONE PUMP SEPARATOR PANEL WITH LUBRICATION PORT
W	USCITA ACQUA PER VALVOLE TONDE CLEAN AIR PIPE FOR TECHNICAL AREA
X	USCITA DI CARICHE REWORKS DATE

19/04/2000	ISSUE	D.C.
REV DATA	MODIFIED	DWG APPROVED
<b>NIDMAC</b>		
NIDMAC srl - Via Kennedy 47 - 20090 Robbio (NO) ITALY Tel. ++39.05.32.82.88 - Fax. ++39.05.32.1387		

CUSTOMER:	TAG N.
	REVISION
	ORDER N.
	PROJECT N.
	DRAWING N. <b>SK.NCS.241</b>
<b>NICOMATIC COATING SYSTEM</b>	
PRELIMINARY LAY-OUT DRAWING OF <b>350 CLASSIC/ELITE</b>	
This drawing and the copyright are the property of Nidmac Srl and all information within its contents are confidential. This drawing must not be reproduced and destined to third party without Nidmac permission.	